

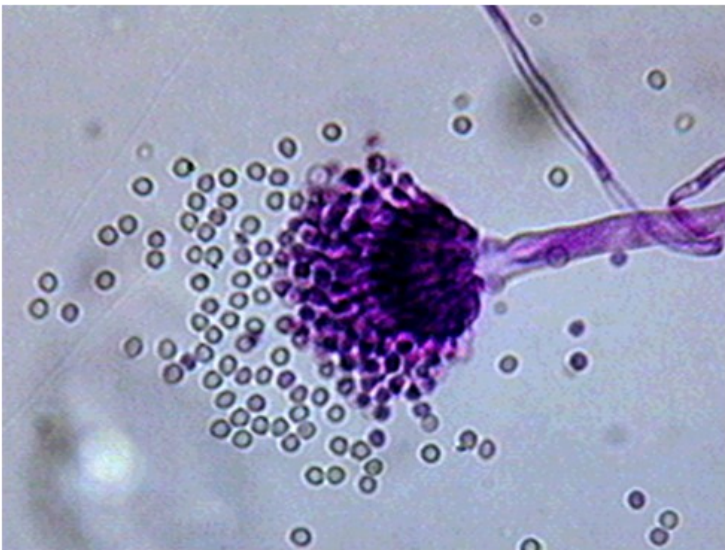
Indoor Air Quality Evaluation

Indoor Air Quality (IAQ) is an integral part of every building, affecting the well being and productivity of occupants and the efficiency of equipment as well as operational costs. U.S. Environmental Protection Agency (EPA) scientists have found that people are exposed to far greater concentrations of common toxic organic chemicals indoors than they are outdoors. Common ailments caused or exacerbated by poor air quality include:

- Eye, nose, and/or throat irritation
- Headaches
- Blood abnormalities
- Asthma
- Fever
- Increased incidence of upper respiratory system infections
- Fatigue

Popli Design Group (PDG) provides Air Contaminant Sampling Evaluation, Building Diagnostic Evaluation, and Microbial Evaluation Services.

Sources of IAQ Problems



The energy crisis of the 1970s caused building owners to conserve energy through reduced filtration of outside air. This movement coincided with an increase in new office building construction and the rehabilitation of older buildings as well as an influx of new, and often chemically treated, office products and furnishings. Buildings became more efficient, but at a cost. IAQ suffered and building occupants developed new and persistent health conditions. This phenomenon is known as “Sick Building Syndrome” or “Tight Building Syndrome.”

IAQ sources include:

Presence of mold, fungi, bacteria, and other biological agents resulting from water intrusion

- Formaldehyde off-gassing from new furniture and carpet
- Elevated radon levels and presence of disturbed asbestos
- Elevated levels of carbon monoxide and carbon dioxide
- Organic compound emissions from unknown sources



Arpad Kolozsvary REM IH
[BRANCH MANAGER]

akolozvary@popligroup.com

[e-mail]
315 479 8380
[telephone]
315 663 1904
[cell phone]
315 479 8880
[fax]

314 State Tower Bldg 109 South Warren St
Syracuse NY 13202

Air Contaminant IAQ Sampling Evaluation

When an IAQ evaluation reveals active or potential contaminant sources, PDG may be retained to conduct subsequent air sampling and analysis to document the extent of contamination. An IAQ sampling evaluation will determine whether certain baseline guidelines are achieved. PDG has performed customized IAQ sampling evaluations for a variety of air contaminants, including Volatile Organic Compounds (VOCs) emitted from construction materials, office furnishings, and printing operations.



IAQ Building Diagnostic Evaluation

PDG generally begins a building diagnostic evaluation by reviewing the system's preventative maintenance program and inspects the condition of system components, including air filters, condensate drain pans, cooling coils, and humidifiers. PDG also performs direct-reading measurements of indoor air contaminants including respirable particulate and carbon dioxide, as well as temperature, and relative humidity. PDG also inspects the building for microbial reservoirs and amplifiers as well as sources of odors, chemical contaminants, and combustion products.



Microbial Investigations

PDG has conducted microbial investigations at office buildings, industrial, commercial, and health care facilities and for insurance companies and home owners that have experienced water disasters and fires resulting in water damage. PDG's staff examines specific microbial sources and water damaged occupied spaces. We conduct indoor and outdoor sampling of these sources using a variety of sophisticated instrumentation to determine the species and concentration of airborne fungi and bacteria. Based on the investigation results, our experienced staff develops remediation protocol and specifications for remediation contractors and provides post-remediation clearance testing.

